

autogen-Screenshots

```
-- synthesis step no. 1:  
-- e:/1-pp-dwh/projects/simple/create_tables.sql - 6  
-- e:/1-pp-dwh/projects/simple/create_tables.sql - 13  
-- e:/1-pp-dwh/projects/simple/work.sql - 5  
-- e:/1-pp-dwh/projects/simple/work.sql - 14  
-- e:/1-pp-dwh/projects/simple/work.sql - 19  
-- e:/1-pp-dwh/projects/simple/work.sql - 27  
INSERT INTO SRC_TBL1 (COL11, COL13, COL15, NAME)  
VALUES (999999999, 6.14, 6.12, 'abc123');  
INSERT INTO SRC_TBL2 (COL21, NAME)  
VALUES (999999999, NULL);  
-- end of data set  
COMMIT;  
EXIT;
```

Abbildung 1: Synthetisierte Testdaten

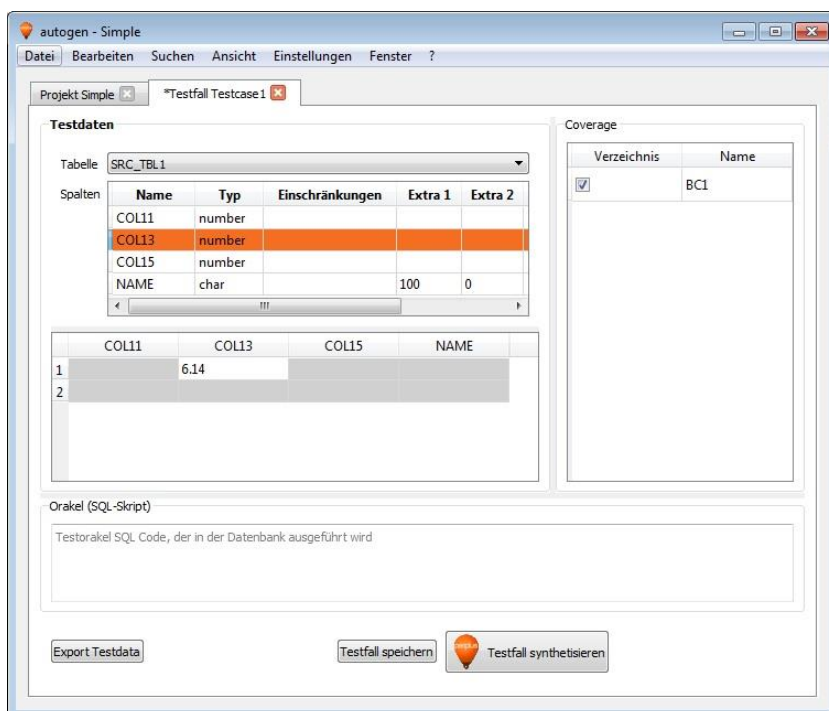


Abbildung 2: Eingabe partieller Testdaten im autogen-Editor

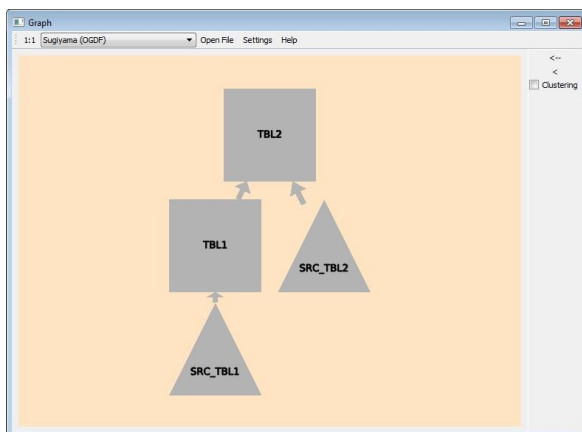


Abbildung 1: Datenflussgraph - vom autogen-Editor visualisiert